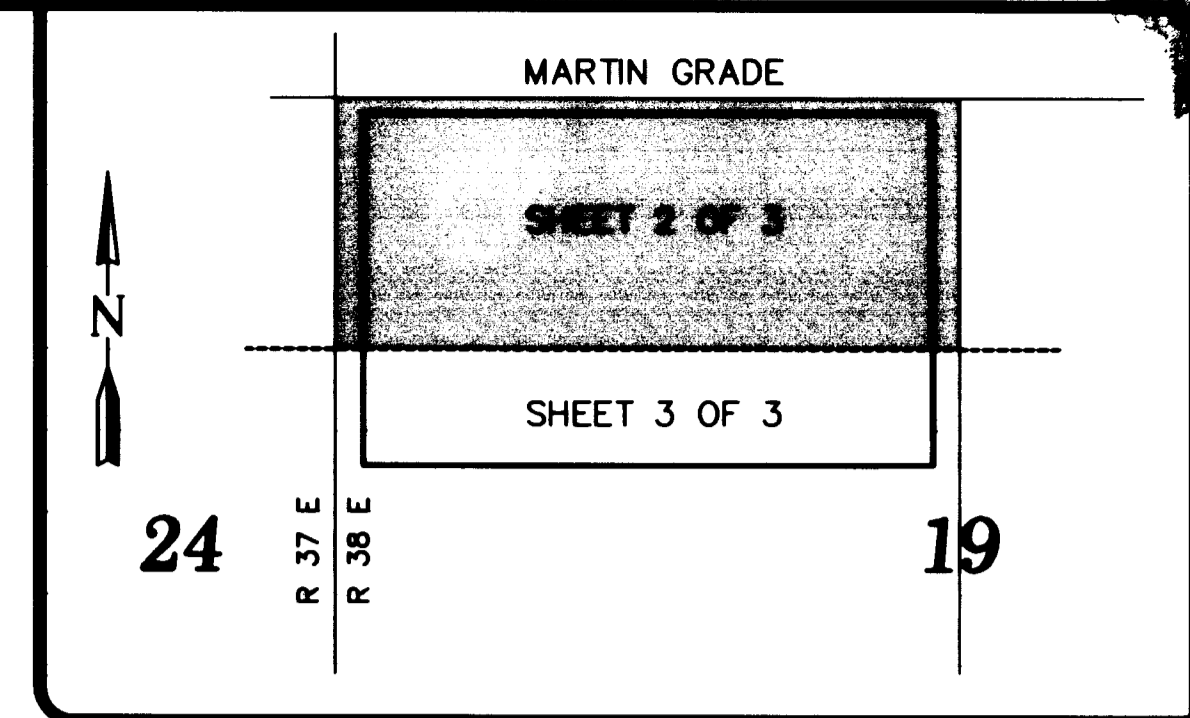


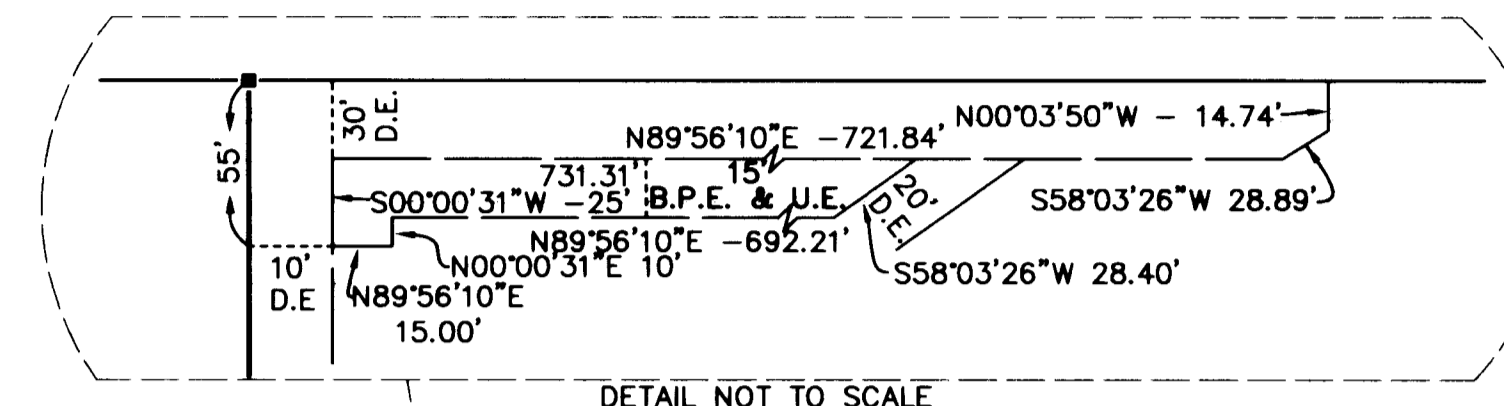
LOCALITY MAP
NOT TO SCALE

PLAT OF HAMPTON RANCHES

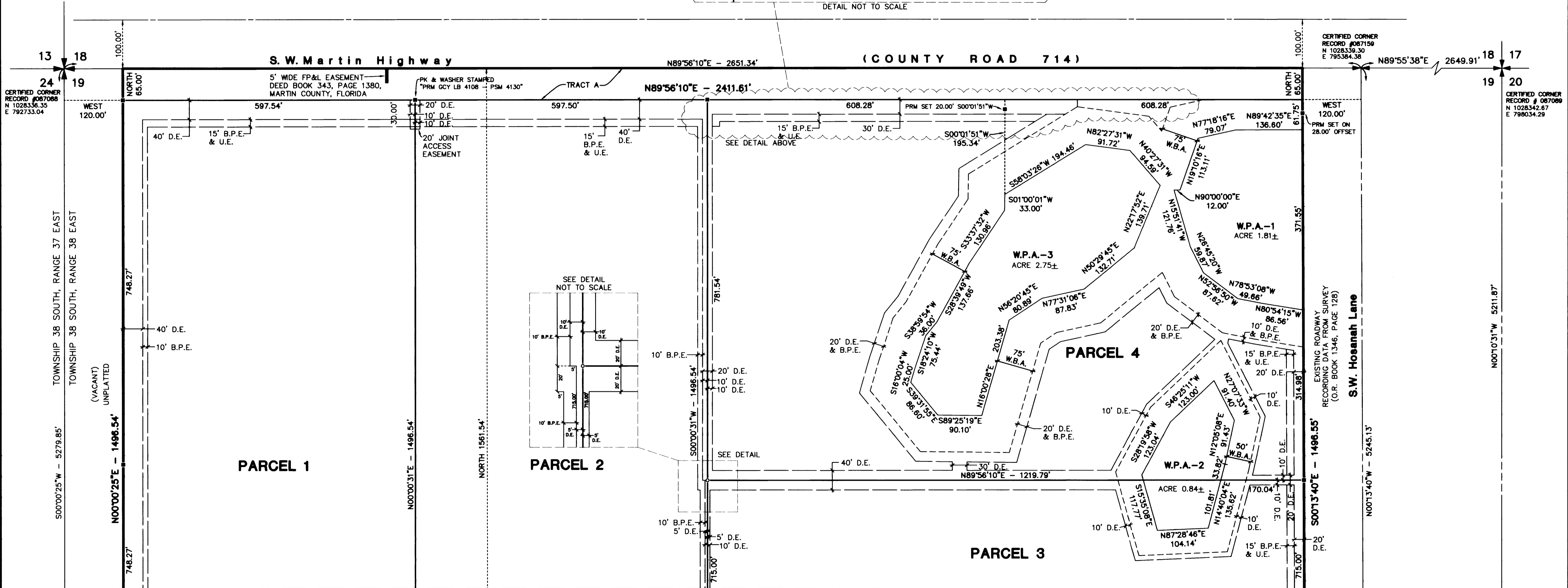
Being a parcel of land lying in Section 19,
Township 38 South, Range 38 East; Martin County, Florida.



KEY MAP
NOT TO SCALE

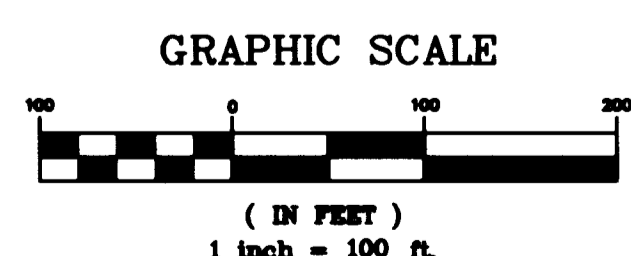


DETAIL NOT TO SCALE



MATCH LINE - SEE SHEET 3 OF 3

LEGEND	
	SET PERMANENT REFERENCE MONUMENT (PRM) 4"x4" CONCRETE MONUMENT WITH DISK LABELED, "GCY INC. P.R.M. LB 4108, PSM 4130"
	FP&L = FLORIDA POWER & LIGHT COMPANY
	LB = LICENSED BUSINESS
	PSM = PROFESSIONAL SURVEYOR AND MAPPER
	W.B.A. = WETLAND BUFFER AREA
	W.P.A. = WETLAND PRESERVATION AREA
	B.P.E. = BRIDLE PATH EASEMENT
	D.E. = DRAINAGE EASEMENT



SURVEYOR'S NOTES

- 1) THIS PLAT, AS RECORDED IN ITS ORIGINAL FORM IN THE PUBLIC RECORDS, IS THE OFFICIAL DEPICTION OF THE SUBDIVIDED LANDS DESCRIBED HEREON AND WILL IN NO CIRCUMSTANCES BE SUPPLANTED IN AUTHORITY BY ANY OTHER FORM OF THIS PLAT, WHETHER GRAPHIC OR DIGITAL.
- 2) THERE MAY BE ADDITIONAL RESTRICTIONS THAT ARE NOT RECORDED ON THIS PLAT THAT MAY BE FOUND IN THE PUBLIC RECORDS OF THIS COUNTY.
- 3) IT SHALL BE UNLAWFUL TO ALTER THE APPROVED SLOPES, CONTOURS, OR CROSS SECTIONS OR TO CHEMICALLY, MECHANICALLY, OR MANUALLY REMOVE, DAMAGE, OR DESTROY ANY PLANTS IN THE LITTORAL OR UPLAND TRANSITION ZONE BUFFER AREAS OF CONSTRUCTED LAKES EXCEPT UPON THE WRITTEN APPROVAL OF THE GROWTH MANAGEMENT DIRECTOR, AS APPLICABLE. IT IS THE RESPONSIBILITY OF THE OWNER OR PROPERTY OWNERS ASSOCIATION, ITS SUCCESSORS OR ASSIGNS TO MAINTAIN THE REQUIRED SURVIVORSHIP AND COVERAGE OF THE RECLAIMED UPLAND AND PLANTED LITTORAL AND UPLAND TRANSITION AREAS AND TO ENSURE ON-GOING REMOVAL OF PROHIBITED AND INVASIVE NON-NATIVE PLANT SPECIES FROM THESE AREAS.
- 4) CONSERVATION TRACTS SHALL BE PROTECTED FROM EXCAVATION, CONSTRUCTION AND OTHER BUILDING MAINTENANCE ACTIVITIES.
- 5) BEARINGS SHOWN HEREON ARE REFERENCED TO THE NORTH LINE OF SECTION 19, TOWNSHIP 38 SOUTH, RANGE 38 EAST. SAID LINE BEARS NORTH 89°56'10" EAST.

CERTIFIED CORNER
RECORD #087160
N 1023130.82
E 798050.25

Job Number 04-1004-13
Licensed Business #4108

GCY
INCORPORATED
PROFESSIONAL SURVEYORS AND MAPPERS
CERTIFICATE OF AUTHORIZATION LB 4108

CORPORATE OFFICE: TALLAHASSEE OFFICE
PO BOX 1489 • 1505 SW MARTIN HWY. 4909 N. MONROE STREET
PALM CITY, FL 34991 TALLAHASSEE, FL 32303
(800) 386-1066 (850) 536-8455